



JUYIHENG

NEW MATERIALS

PROFESSIONAL STEEL SUPPLIER

EXPORTS TO
50+
COUNTRIES

Contact us / JUYIHENG NEW MATERIALS CO.,LTD

TELE PHONE

0531-85950882

Website SdjuyihengSteel.com

Address Huaiyin district, Jinan city,
Shandong Province, China

Main Products

Hot Rolled Coil/Plate/Strip Cold Rolled Steel Plate/Coil/Strip Oriented/
Non-Oriented Silicon Steel Black Annealed Steel Coil Pickled And Oiled Steel
Coil Chequered Steel Plate/Coil Steel H/I Beam etc.

MAIN PRODUCTS

Hot Rolled Coil/Plate
Cold Rolled Coil/Plate
Black Annealed Steel Coil
Pickled And Oiled Steel Coil
Checkered Coil/Plate,etc



JUYIHENG
New Materials CO.,LTD

20+
Years

Manufacturer Experience

SDJUYIHENGSTEEL.COM



CONTENTS

01	HOT ROLLED	Hot Rolled Steel Coil	03-04
		Hot Rolled Steel Plate	05
		Hot Rolled Steel Strip	06
02	COLD ROLLED	Cold Rolled Steel Coil	07-08
		Cold Rolled Steel Plate	09
		Cold Rolled Steel Strip	10
		Oriented Silicon Steel	11
		Non-oriented Silicon Steel	12
03	STEEL COIL	Black Annealed Steel Coil	13
		Pickled And Oiled Steel Coil	14
		Checkered Plate/Coil	15-16
04	STEEL PROFILE	Carbon Steel/Galvanized Steel Angle	17-18
		Steel H/I Beam	19-20
		steel sheet pile	21-22
		Steel C/U Beam	23-24
		Steel Flat Bar	25
		Steel Round Bar	26
		Steel Square Bar	27
05	WIRE PRODUCT	Rebar	28
		Steel Wire Rod	29
		Tinplate	30
		Galvanized Steel Wire	31
		Galvanized Steel Flat Wire	32
		Black Annealed Wire	33
		Steel Wire Mesh	34
		Steel Grating	35-36

ABOUT US

20+

Years Export Experience

50+

Exports To Countries

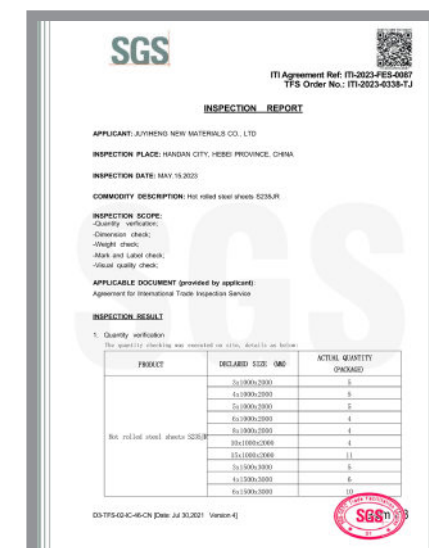
Shandong Juyiheng New Material Co., Ltd. is located in Jinan. It has more than ten years of experience in steel trading. And It is the only designated steel supplier for Jinan Metro Project. Our company exports more than 200,000 tons of steel annually.

Our company has established strategic partnerships with domestic large steel companies such as Baosteel, Laiwu Steel, Rizhao Steel, Handan Iron and Steel, Angang and Maanshan Iron and Steel.

The products include carbon steel plate/coil, round bar, products profile steel etc.The application of our products cover oil, natural gas, shipbuilding, chemical industries, environmental protection, boiler making, water conservancy, power, steel structural products, building, etc.

In line with the development concept of " Customer demand is our service goal." After the efforts of our company, our products have been exported to the following countries at the moment: Peru, South Africa, Vietnam, Myanmar, Ethiopia, Australia, Bahrain, Mozambique, Singapore, Brazil, Russia, Saudi Arabia, Colombia, Kenya, Zambia etc.

Looking forward to doing business and making friends with clients all around the world.



“

Hot Rolled Steel Coil

As a high-quality metal material, hot rolled coil has a wide range of applications and excellent performance, providing an ideal material choice for industrial manufacturing.



”

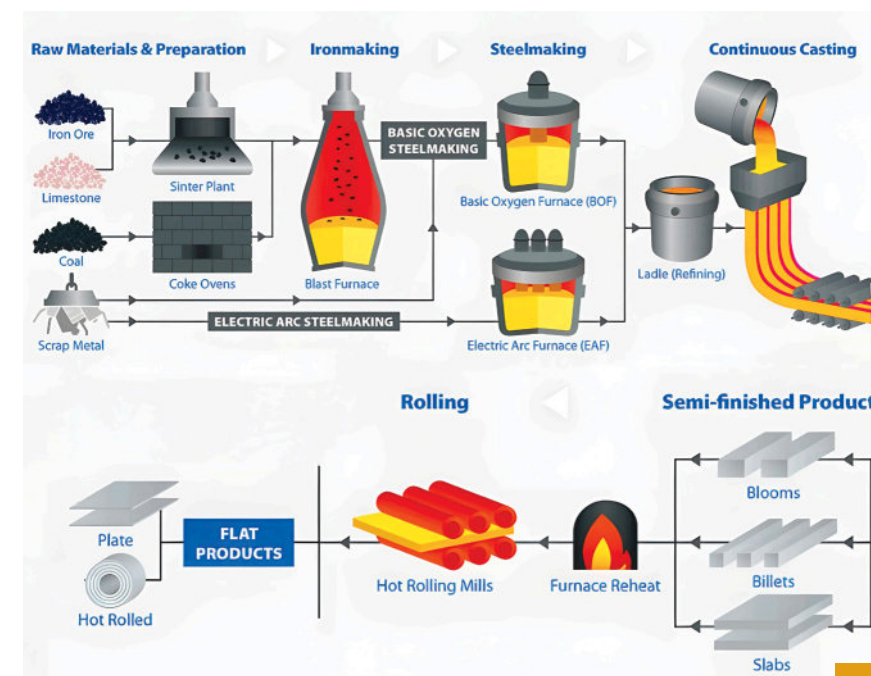


Length	1m-20m or as required
Width	0.6m-4.8m or as required
Thickness	0.1m-300m or as required
Standard	AISI, ASTM, DIN, JIS, GB, JIS, SUS, EN etc
Grade	A36, A106Gr, Q235, Q345, ST37-2, ST52-3 A516-GR, 55, GR60, GR70, GR.12, GR.22, 13CrMo44, 10CrMo910
Model NO.	Q235, Q355, SS400, S23JR, S355JR, A36
Specification	Manufactured according to customer
Material Quality	Accept Third Party Inspection
Applications	Building steel structure, bridge guardrail, mechanical parts, automobile body, ship deck

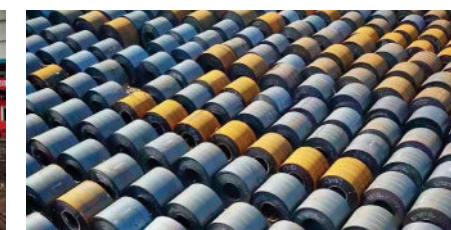
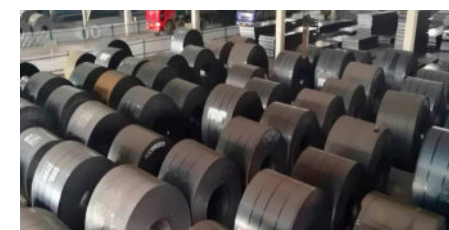
Product Display



Product Process&Factory



Hot rolled coil production process is to heat the slab to a suitable temperature, through roughing and finishing rolling group continuous rolling, and finally get good mechanical properties, smooth surface sheet. This process ensures product quality and production efficiency, providing high-quality steel for various industries.



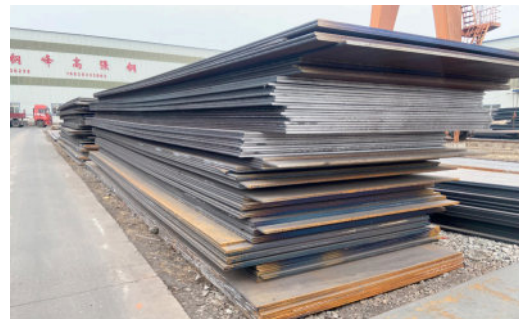
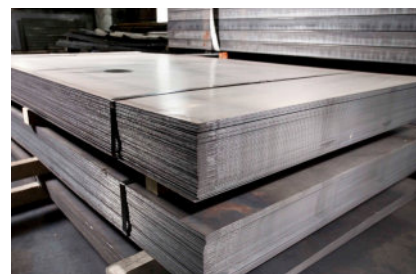
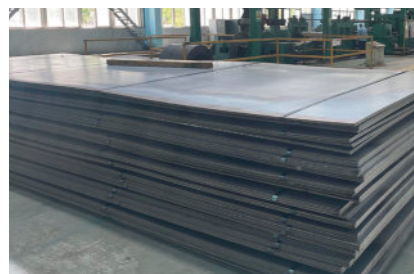
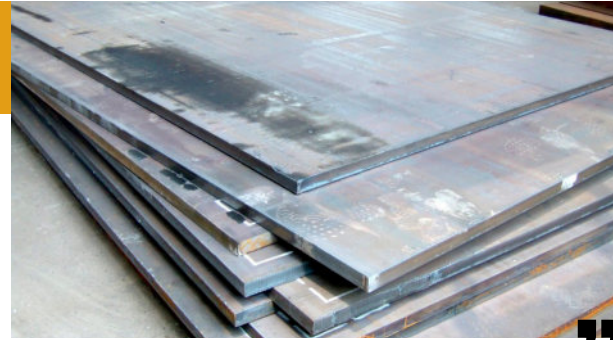
Product Applicaton

Hot rolled coil is an important steel product and has a wide range of applications. Because of its high strength, good toughness and easy processing, hot rolled coil has been widely used in construction, automobile, bridge, machinery, pressure vessel and other industries.



Hot Rolled Steel Plate

Hot-rolled plates, that is, hot-rolled steel plates and steel strips, commonly known as hot plates, refer to steel plates with a width greater than or equal to 600mm and a thickness of 0.35-200mm and steel strips with a thickness of 1.2-25mm.



Product Testing

We adopt advanced testing equipment and instruments, uphold a rigorous attitude and adopt scientific testing methods to ensure the accuracy and reliability of the results, and provide reliable guarantee for the quality of carbon steel coil. Choose us to protect your steel coil applications.



Hot Rolled Steel Strip

Hot-rolled steel strip generally refers to coiled strip with a thickness of 1 to 20mm and a width of 600 to 2000mm. Hot-rolled strips can be used directly as hot-rolled steel plates, or cold-rolled strips can be supplied as blanks.



Plate and strip are rolled out by flat rollers, so it is simple and easy to change product specifications, easy to adjust and operate, and easy to realize comprehensive computer control and automated production. The shape of strip steel is simple, it can be produced in coils, and it is used in the largest amount in the national economy, so it must and can achieve high-speed continuous rolling production.



Product Display



Cold Rolled Steel Coil

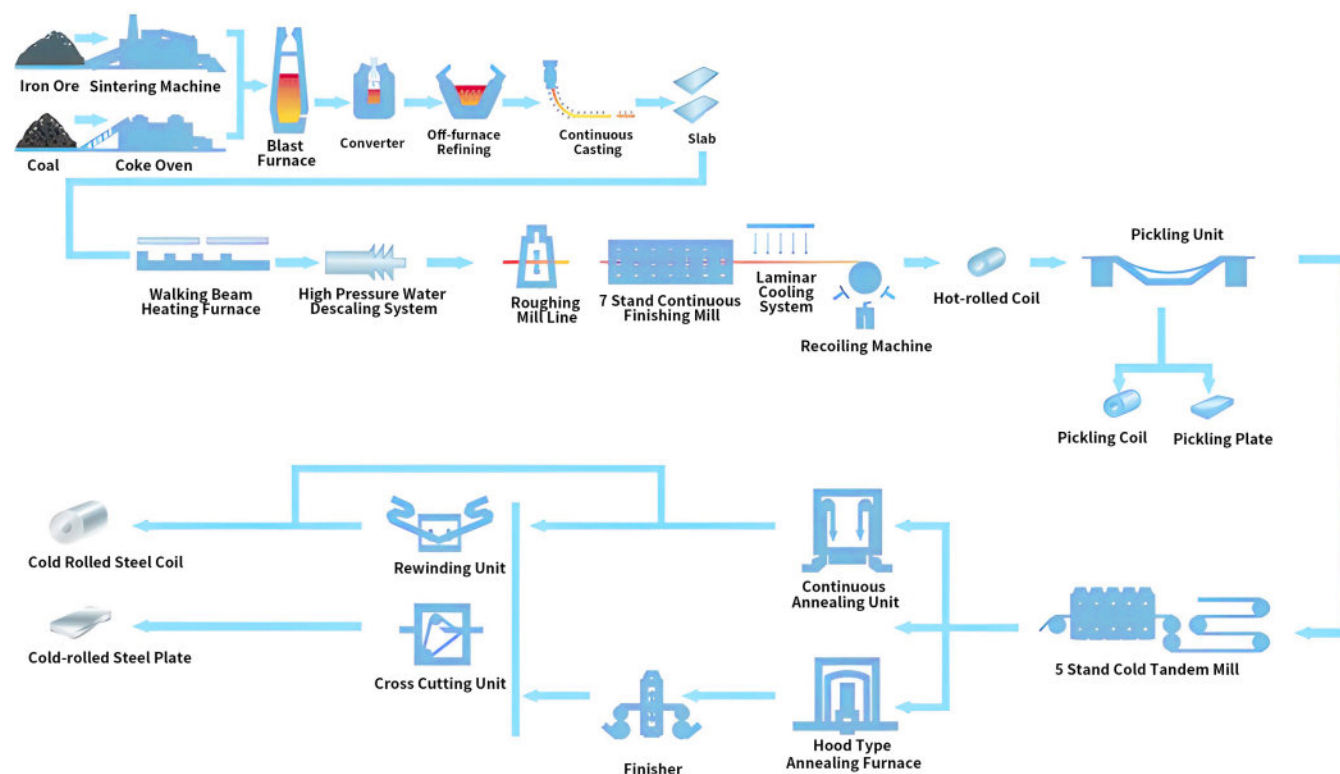
Cold-rolled coils have higher precision, better surface quality and lower energy consumption. Cold-rolled coils have been widely used in modern industrial production.



Thickness	0.1-6.0mm
Width	100-2000mm or customized
Length	50-2000mm or customized
Surface	Surface Treatment Bright, Black annealed, Oil, Slight Oil, Oilless
Standard	AISI, ASTM, BS, DIN, GB, JIS, SPCC, SPCD, SPCE
Nominal Thickness	0.12-4.00mm
Nominal Width	600-1500mm
Tolerance	±1%
Coil Inner Diameter	508mm, 610mm
Coil Weight	6-8, 16-22 Tons

No matter what thickness, width and length of cold rolled coil you need, we can provide you with a satisfactory solution. In addition to the standard specifications, we also provide customized services, according to your special requirements, to create cold-rolled coil specifications to meet your needs.

Product Process



Product Display



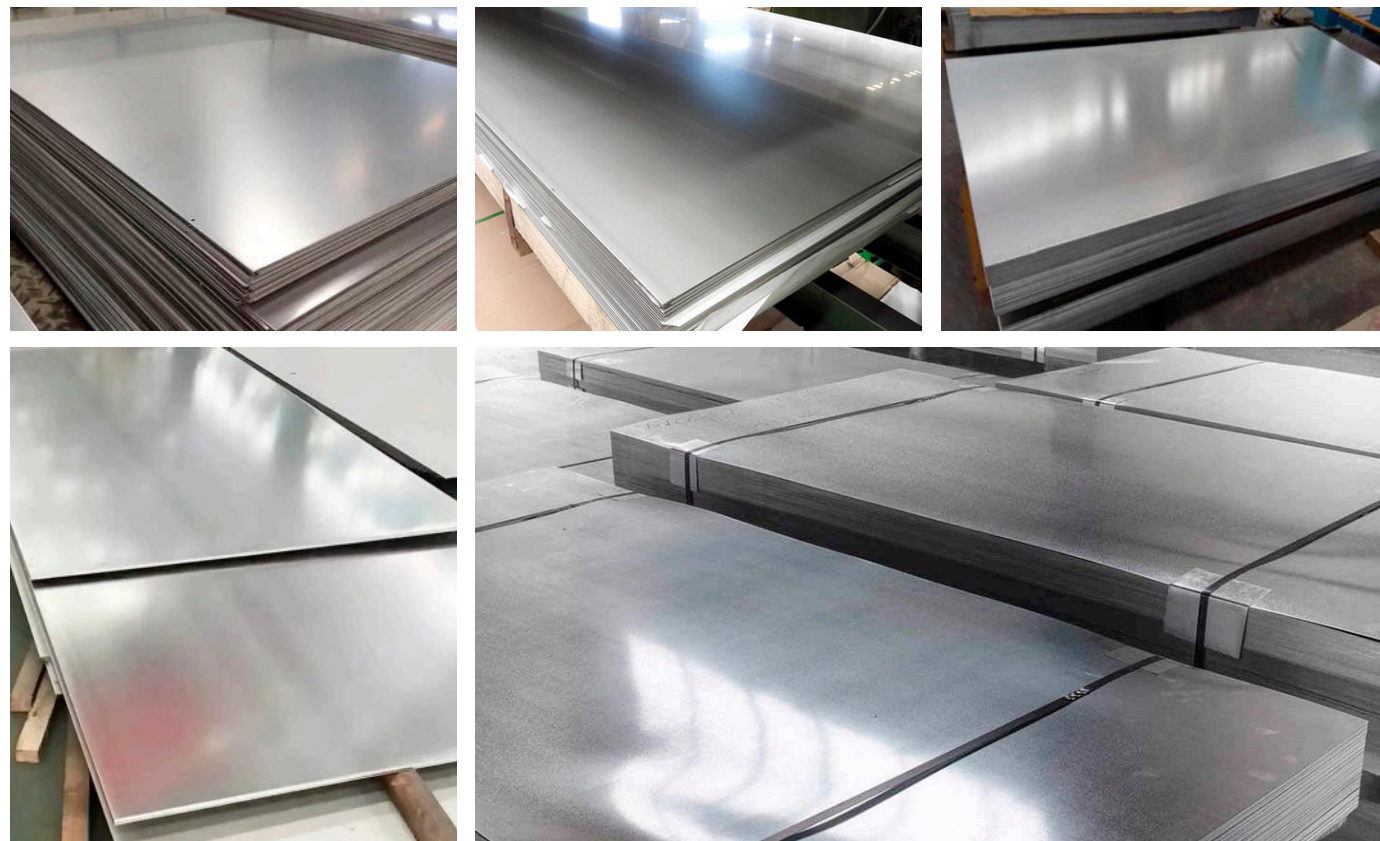
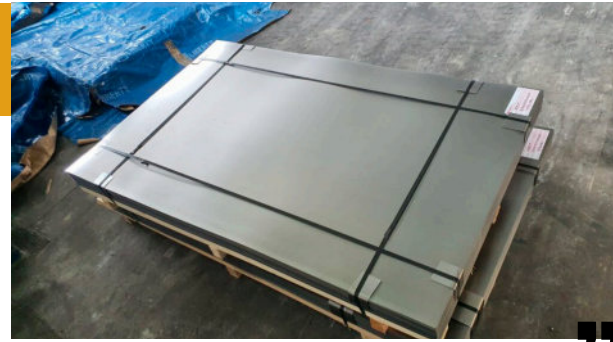
Product Applicaton

As a kind of steel product with high strength, high toughness and corrosion resistance, cold-rolled coil is widely used in various fields. Whether it is traditional industries such as automobiles, home appliances, construction, or emerging fields such as new energy and environmental protection, cold-rolled coils have shown excellent performance.



Cold Rolled Steel Plate

The advantages of cold-rolled plates are high dimensional accuracy, smoother surface, and special metallic luster. It is suitable for scenes that have certain surface requirements, such as equipment casings, kitchen appliances, decoration projects, etc.



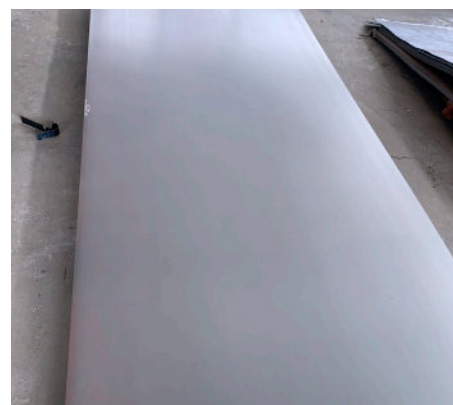
Product Features



Good Durability



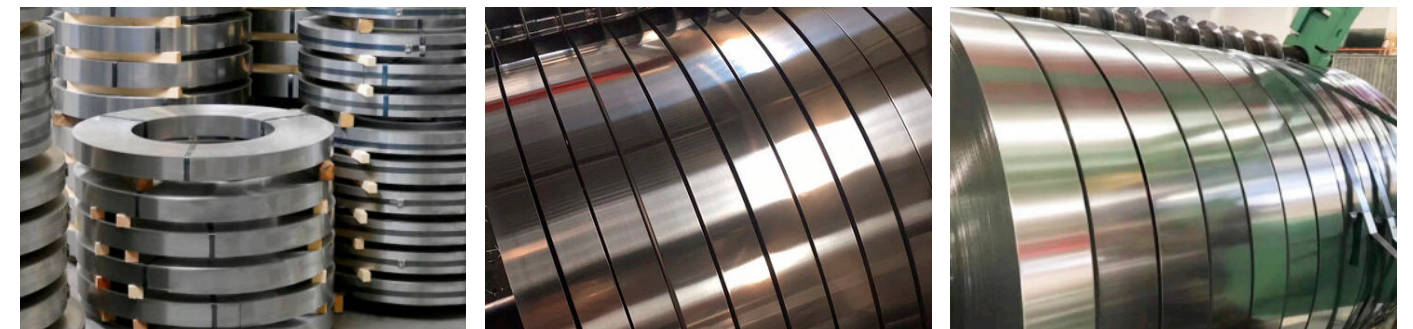
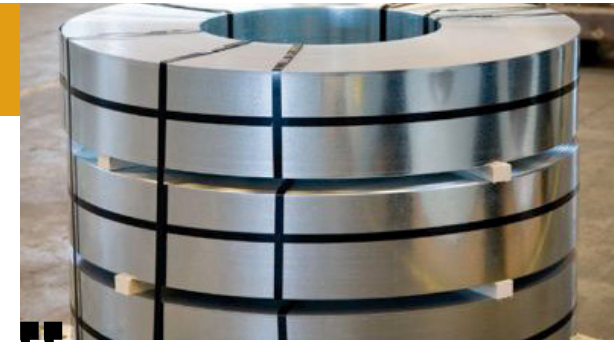
Good Heat Resistance



Good Heat Reflectivity

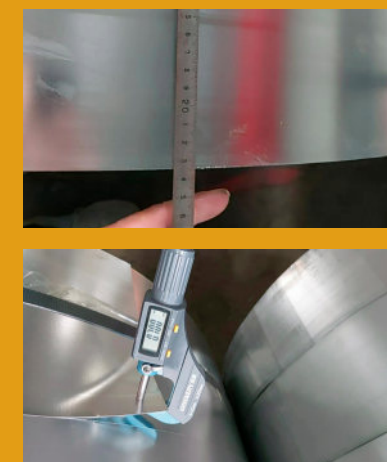
Cold Rolled Steel Strip

Cold-rolled strip products have precise dimensions and uniform thickness. The strip thickness difference generally does not exceed 0.01-0.03mm or less, which can fully meet the requirements of high-precision tolerances.



Product Application

Cold-rolled steel strip has a smooth surface and excellent processing. It is used in automobiles, refrigerators, washing machines and other home appliances, as well as industrial equipment and various building materials. With economic development, cold-rolled steel plates have been called a necessary material in modern society.



We use advanced testing equipment and technology to accurately measure and evaluate every detail of cold rolled coil. From appearance to interior, from size to performance, every link is strictly controlled, only to provide you with the best quality products.

“ Cold Rolled Electrical Steel ”

Cold-rolled electrical steel, also known as cold-rolled silicon steel or silicon steel sheet, is a high-performance steel specifically used in electric motors, transformers, and other electrical equipment.



	Category		Silicon content%	Nominal thickness mm
Cold-rolled electrical steel	Non-oriented electrical (cold-rolled motor steel)	Low carbon, low silicon	≤ 0.5	0.50, 0.65
		siliconsteel	> 0.3-3.2	0.35, 0.50
	Oriented electrical steel (transformer steel)	Ordinary oriented electrical steel	2.9-3.3	0.20, 0.23, 0.27, 0.30, 0.35, 0.50
		High magnetic orientation electrical steel	2.9-3.3	

Cold-rolled electrical steel is classified according to the direction of magnetic permeability, and the magnetic properties of non-oriented electrical steel are isotropic, which is suitable for low-demand scenes. Oriented electrical steel has excellent magnetic properties and is widely used in high-performance electrical equipment.

◆ Cold-rolled oriented electrical steel

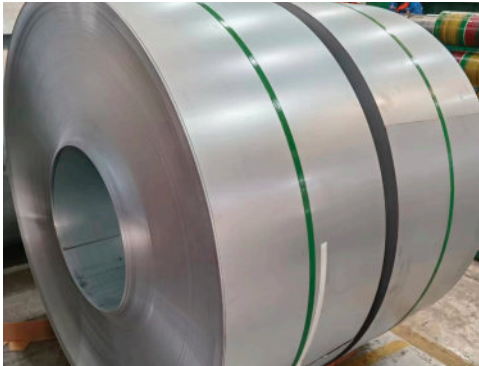
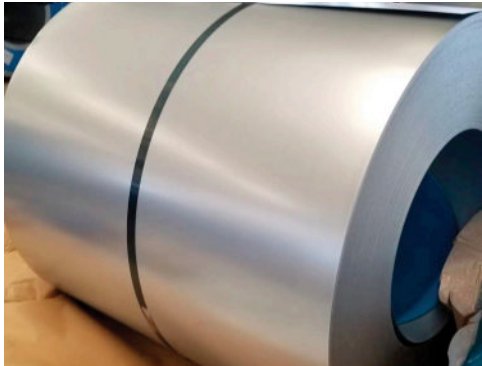
● Standard Dimensions Of Products

Available Thickness	Available Width Range	Inside Diamter
0.18, 0.20mm	850-1200mm	508±10mm
0.23, 0.27, 0.30, 0.35mm	850-1200mm	508±10mm

● Dimensional And Shape Tolerances

Nominal Thickness	Nominal Thickness Tolerance	Longitudinal Thickness Tolerance	Traverse Thickness Tolerance	Width Tolerance	Flatness	Camber Within 2m
0.18mm	±0.015mm	≤ 0.020mm	≤ 0.010mm	0~+1mm	≤ 1.5mm	≤ 0.9mm
0.20mm	±0.015mm					
0.23mm	±0.020mm					
0.27mm	±0.025mm	≤ 0.025mm	≤ 0.015mm			
0.30mm	±0.025mm					
0.35mm	±0.025mm					

Note: a. Traverse thickness deviation refers to the thickness difference between the sheet center and 15mm from the edge. b.The longitudinal thickness difference is the difference of the measured maximum thickness and the minimum hickness in the longitudinal direction (parallel to the rolling direction) at an arbitrary 2m length of steel on steel.c. Please consult us if you have special requirements.



◆ Cold-rolled non-oriented electrical steel

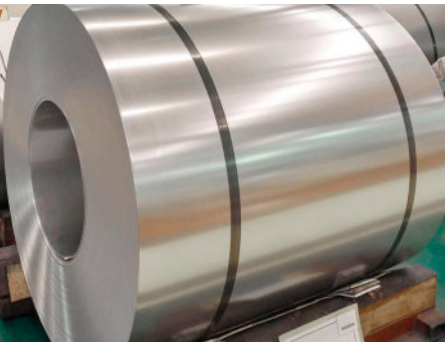
● Standard Dimensions Of Products

Available Thickness	Available Width Range	Inside Diameter
mm	mm	mm
0.15, 0.20	950-1000	508±10
0.30, 0.35, 0.50, 0.70, 0.75, 0.80, 0.85	1000-1250	508±10

● Dimensional And Shape Tolerances

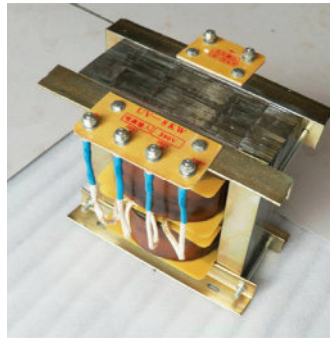
Nominal Thickness	Nominal Thickness Tolerance	Traverse Thickness Tolerance	Width Tolerance	Flatness	Camber Within 2m
mm	mm	mm	mm	%	mm
0.15	±0.012	≤ 0.010	0~+1.5	≤ 1.5	≤ 1.0
0.20	±0.012	≤ 0.010			
0.30	±0.015	≤ 0.012			
0.35	±0.015	≤ 0.012			
0.50	±0.020	≤ 0.015			
0.70	±0.030	≤ 0.025			
0.75	±0.030	≤ 0.025			
0.80	±0.040	≤ 0.030			
0.85	±0.040	≤ 0.030			

a. Traverse thickness deviation refers to the thickness difference between the sheet center and 15mm from the edge. b. Please consult us if you have special requirements.



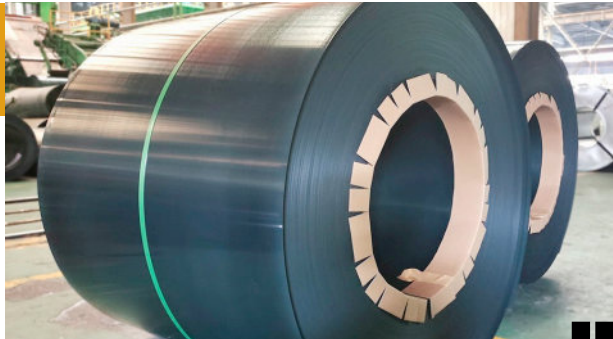
Product Applicaton

The main uses of electrical steel involve the manufacture of magnetic cores and components for various electrical equipment, especially in motors, transformers, generators and other related equipment plays a vital role. Electrical steel is also widely used in other fields such as power transmission, magnetic separation and sensors.

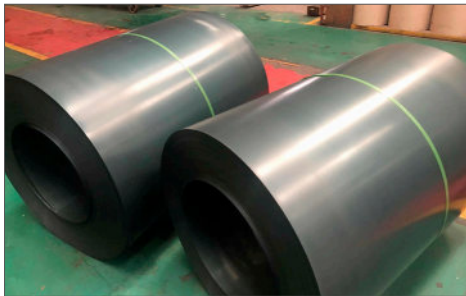
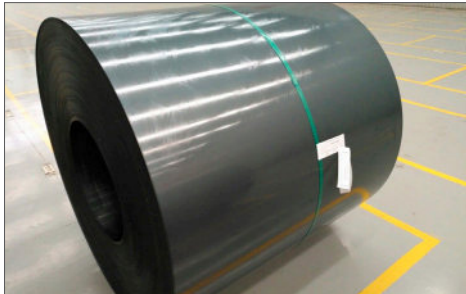


Black Annealed Steel Coil

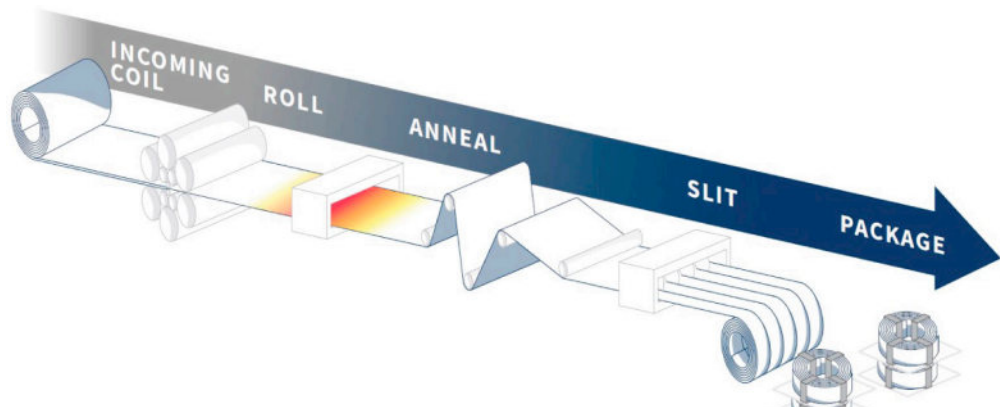
Black annealed steel coil play an important role in many fields due to their excellent performance and wide applicability. It has the characteristics of high dimensional accuracy, good surface quality, and easy processing.



Material	Q195, Q235, Q345, DX51D, SPCC, SPCD, SPCE, ST12~15, DC01, DC02, DC04, DC05, DC06 etc		
Function	Furniture plpe and profile, oil drum, refrigerator casing, shelf fabricate, industrial panels etc		
Available Width	8mm~1250mm	Edge	Clean shear cutting, mill edge
Available Thickness	0.12mm~4.5mm	Weight per roll	1~8 tons
Surface Treatment	Bright annealing, full black annealing, batch, annealing & light oil or bared		

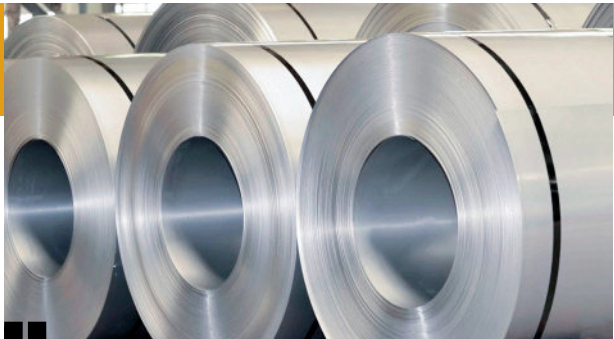


Product Process



Pickled And Oiled Steel Coil

As a kind of steel product with excellent surface quality, strong anti-corrosion properties and good machining properties, pickling coated coil has been widely used in various fields.



The main characteristics of pickling coil are reflected in the following aspects:

Good surface quality: The surface is easy to weld, oil and paint.

High dimensional accuracy: in the subsequent processing and use process, it can meet the higher accuracy requirements.

Excellent mechanical properties: Good cold bending, elasticity, corrosion resistance and high plasticity.

Enhanced corrosion resistance: Surface oxides and impurities are removed, enhancing its corrosion resistance.

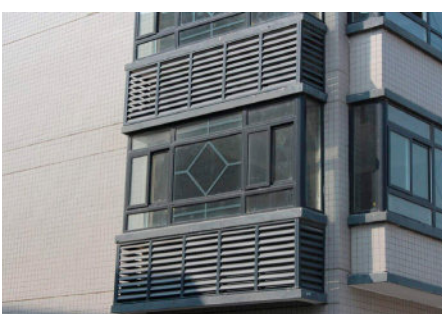
Improve the beauty: the luster of the metal surface is improved, and the color is more uniform.



Product Applicaton

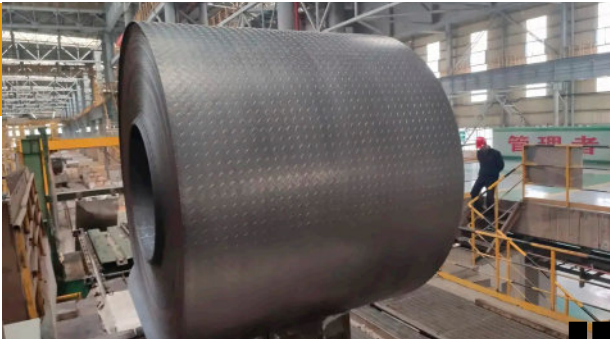


Pick and oiled steel coil is a kind of pickling steel roll, which can remove the oxidation and rust on the surface of the steel and improve the surface quality of the steel. It is used in a wide range of industries, including the automotive industry, machinery manufacturing, construction, home appliance manufacturing, and pipe manufacturing.



“Chequered Steel Plate/Coil”

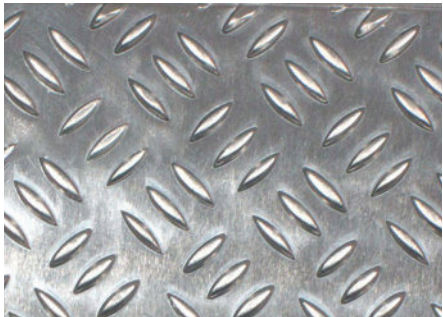
Chequered steel plate/coil is a sheet of metal with a specific pattern or texture. The surface usually has a protruding edge, which not only increases the beauty of the product, but also gives it anti-slip characteristics.



Material	Q235, SS400, A36, ST37-2, S235JR, S234, S335JR, S335, SS440, SM400A, SM400B
Thickness	2mm to 12mm
Width	1000mm to 1500mm
Length	2m-12m or according to customer's special request
Standard	ASTM, DIN, JIS, BS, GB/T
Grade	10#-45#, 16Mn, A53-A369, Q195-Q345, ST35-ST52
Tolerance	Thickness: +/-0.02mm, Width: +/-2mm
Pattern	Tear Drop, Diamond, Lentils form, Round beans form

Product Appearance

The surface of the pattern plate roll has a specific pattern, which can be diamond-shaped, lentil-shaped, round-bean-shaped or other customized shapes.



Combined Type



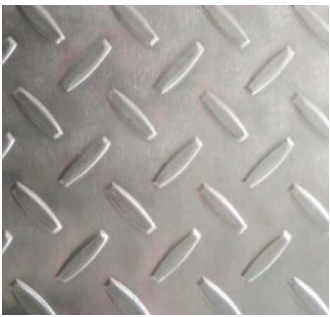
Willow Leaf



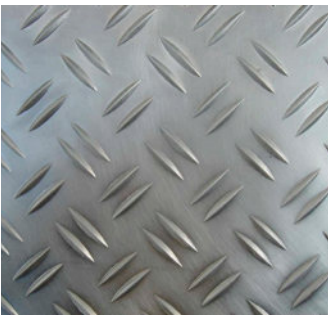
Lenticular Type



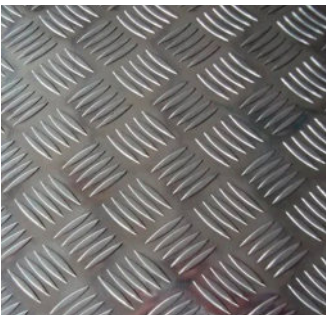
Pointer Type



Combined Type

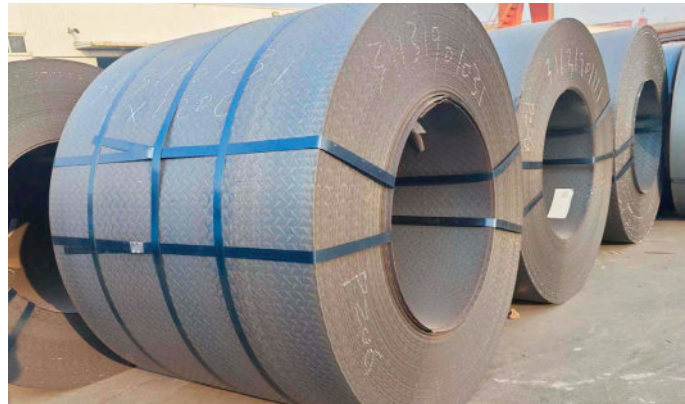
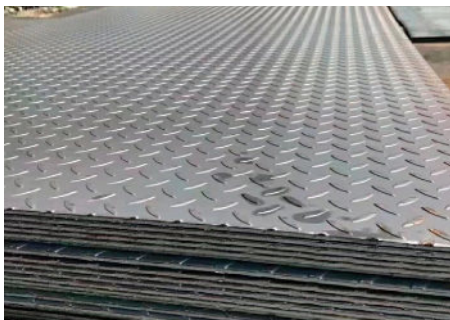


Double Reinforcement



Five Reinforcement

Product Display



Product Testing

We follow the relevant international and domestic standards, carry out strict quality control of the pattern plate, and carry out comprehensive and accurate testing of the performance of the pattern plate to ensure its safety and stability in various application scenarios.



“

Angle Steel

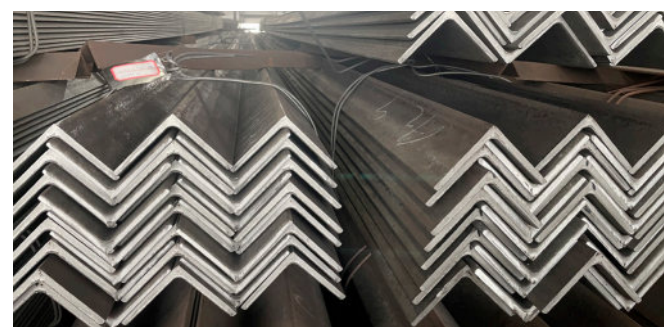
Angle steel can be composed into various stress-bearing components according to different structural needs, and can also be used as connectors between components. It is widely used in various building structures and engineering structures.



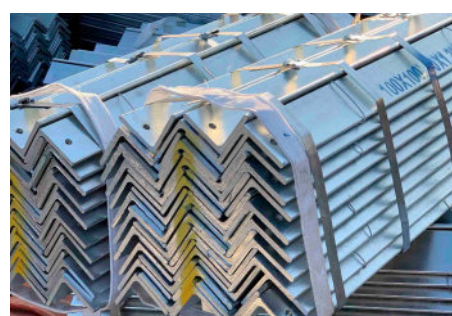
”

Standard	GB, T9787-88, JIS, G3192:2000, JIS G310:2004, BE EN10056-1:1999, BS EN10025-2:2004		
Materials	Q235B, Q345B, SS400, SS540, S235JR, S235JO, S235J2, S275JR, S275JO etc		
Thickness	3-24mm	Length	1-12m,or as requirements
Equal Angle	Size	20-200mm	
	Weight	0.597-71.168kg/m	
Unequal Angle	Size	25*16-200*125mm	
	Long Side	20-200mm	
	Short Side	16-125mm	
	Weight	1.687-43.588kg/m	
Technique	Hot rolled, Cold rolled, Galvnized		
Packing	With bundle, as per standard seaworthy package or as customer's requirement		

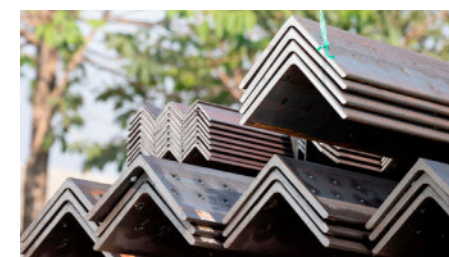
Product Features



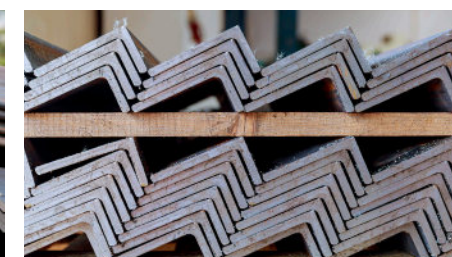
1. The angular structure gives it good supporting strength.
2. Under the same supporting strength, the angle steel is lighter in weight, consumes less material, and saves costs.
3. The construction is more flexible and takes up less space.



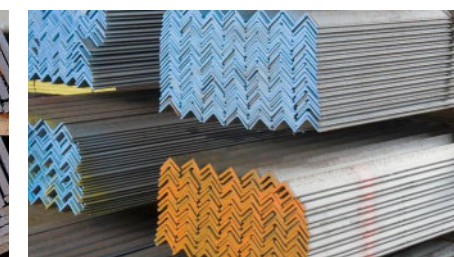
Product Appearance & Display



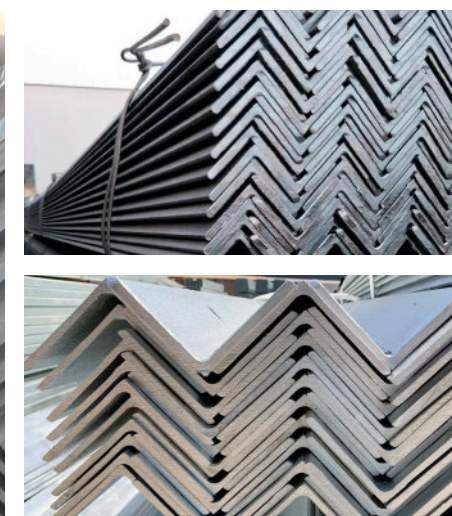
Hot Rolled



Cold Rolled



Galvanized

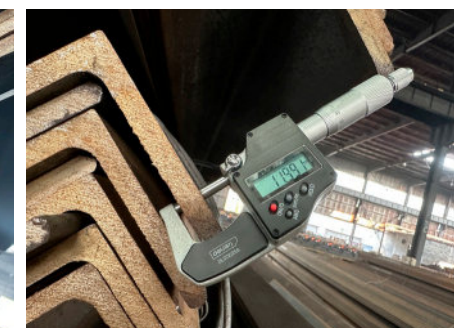


Product Application

Widely used in various building structures and engineering structures, such as house beams, bridges, transmission towers, lifting and transportation machinery, ships, industrial furnaces, reaction towers, container racks, cable trench supports, power piping, busbar support installation, and warehouses Shelves etc.



We know the importance of quality, so we use advanced testing equipment and professional technical team to strictly control the quality of angle steel.



“

Steel H/I Beam

The main difference between an H-beam and an I-beam is that the web of an H-beam is much thicker than that of an I-beam. A thicker web means a stronger beam, which allows for more load-bearing capacity.



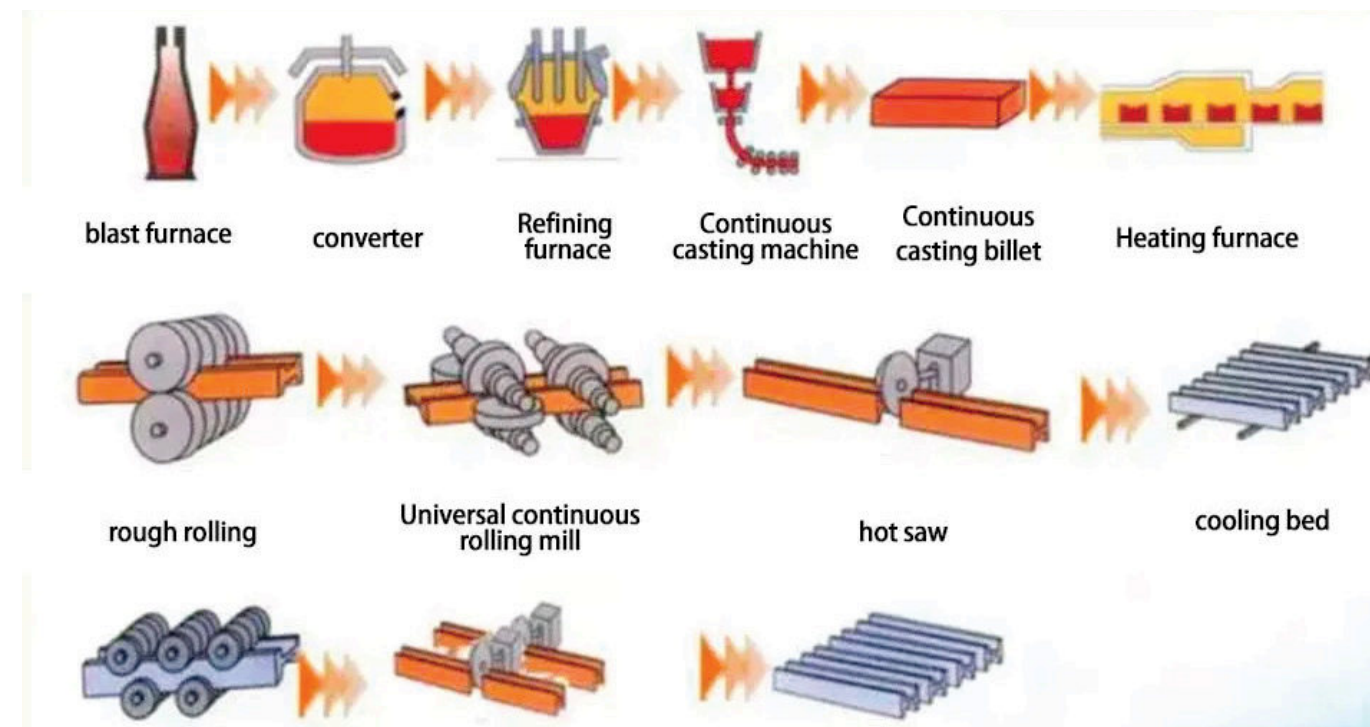
”

◆ Steel H/I Beam

Grade	Q235B	Technique	Hot Rolled	Thickness	3-35mm
Length	3-12m	Flange Width	20-300mm	Flange Thickness	6-40mm
Web Width	20-300mm	Web Thickness	3-50mm	Tolerance	±1%
Application	Industry, construction	Processing Service	Bending, Welding, Decoiling, Punching, Cutting		



Product Process



Product Applicaton

Mainly used for: various building structures, industrial plants, large bridges, heavy equipment, highways, ship frames, mine support, foundation treatment and dam engineering etc.



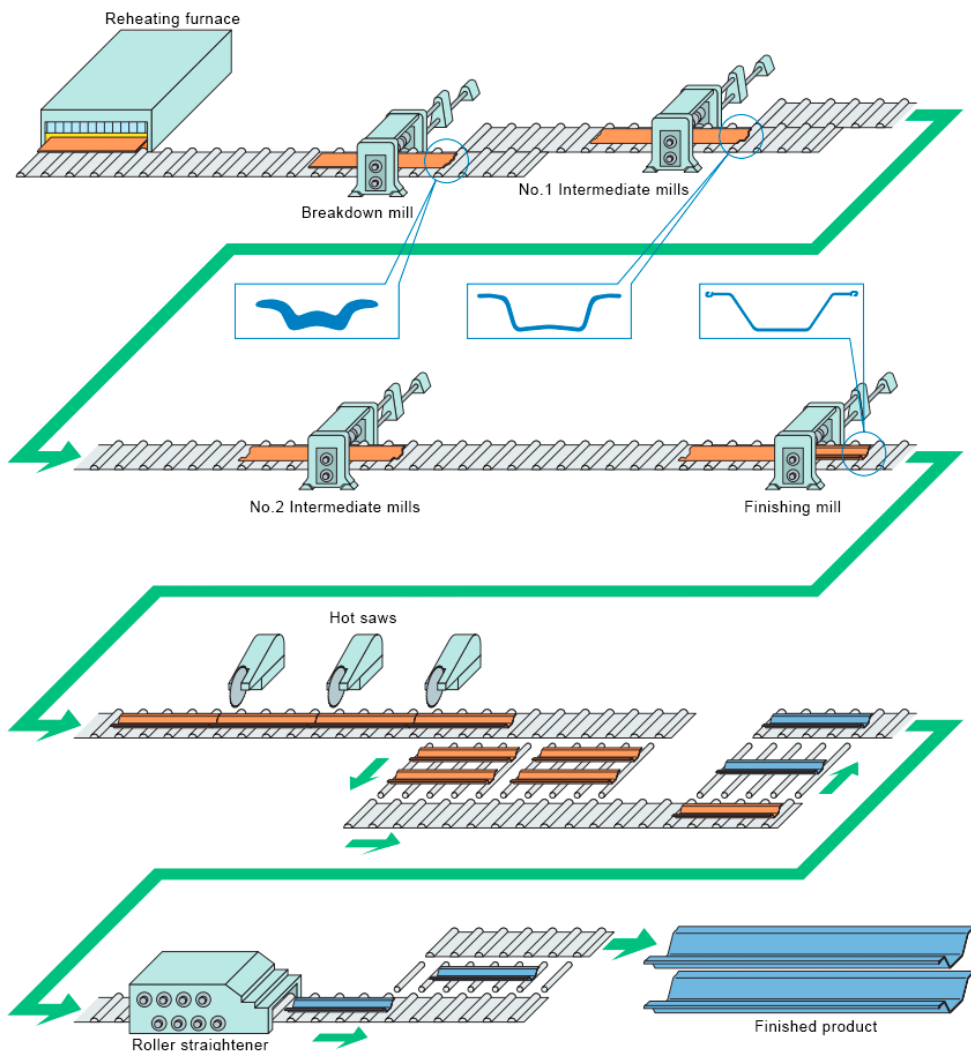
“ Steel Sheet Pile

Steel sheet pile is a steel structure with linkage devices on the edges, and the linkage devices can be freely combined to form a continuous and tight retaining soil or water retaining wall.

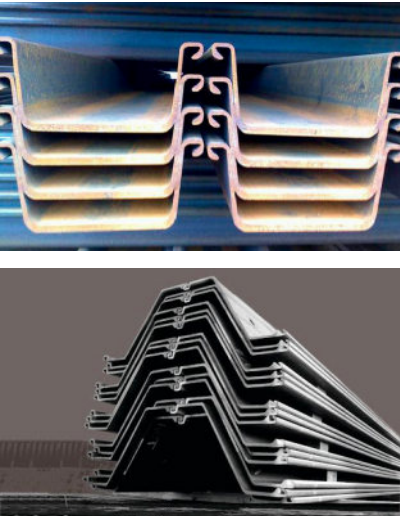


Steel Grade	S275GP, S355GP, S390GP, S430GP
Permanent usages	Cofferdam, retaining walls, car parking, bulkheads, Land reclamation, Dock and jettyP
Temporary usages	Bridge piers and abutment, canals, excavation, quay wall, road
Standard	EN10248, JIS A 5523 and JIS A 5528, ASTM A328 / ASTM A328M
Watertight	by sealant or welding
Other Applications	Deep foundations,containment barriers,tunnel,environment

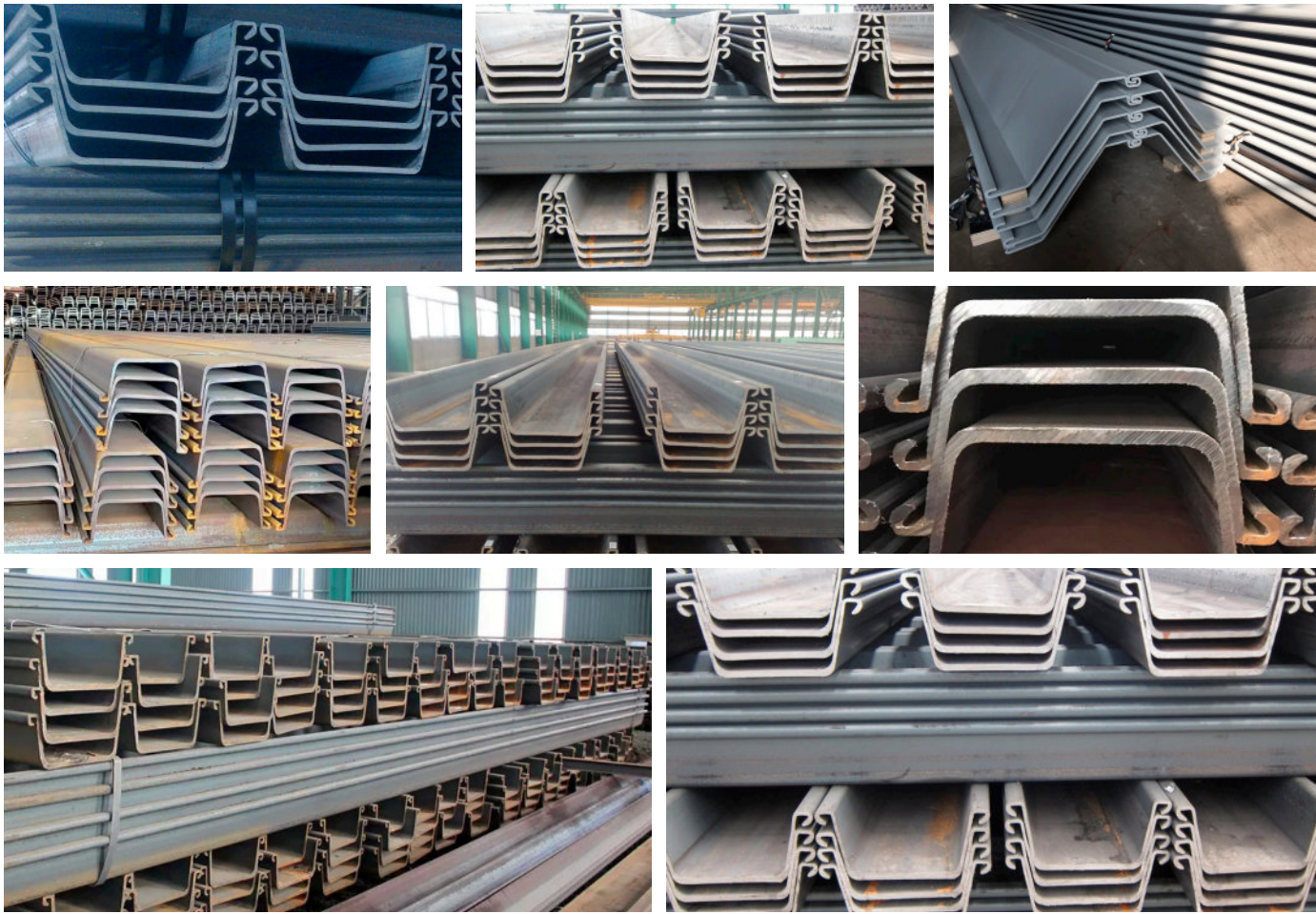
Product Process



Cold-formed steel sheet piles are continuously rolled and formed by a cold-forming unit, and the side locks can be continuously overlapped to form a steel structure with a sheet pile wall. Cold-formed steel sheet piles are made of thin plates (common thickness is 8mm ~ 14mm) and processed by cold-forming forming units.

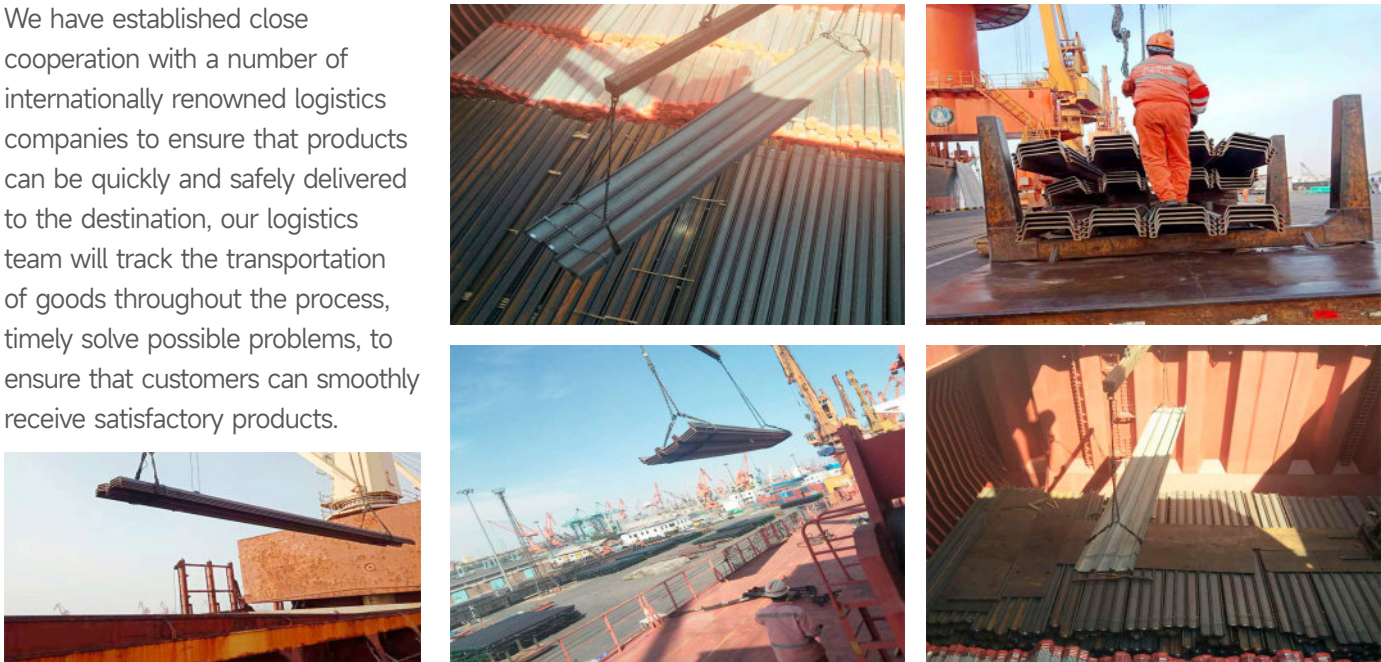


Product Display



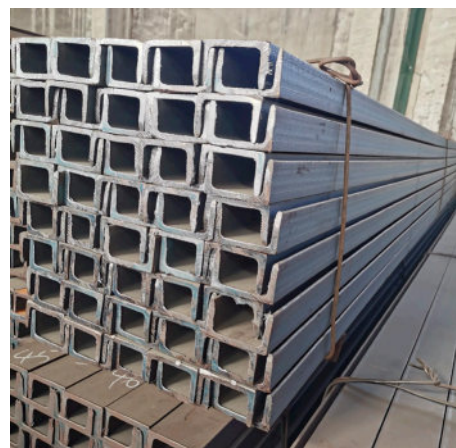
Product Delivery

We have established close cooperation with a number of internationally renowned logistics companies to ensure that products can be quickly and safely delivered to the destination, our logistics team will track the transportation of goods throughout the process, timely solve possible problems, to ensure that customers can smoothly receive satisfactory products.



Steel U/C Channel

Steel C channel is widely used in purlins and wall beams of steel structure buildings. Steel U channel is used for secondary support of mine tunnels and mine tunnels, and support for mountain tunnels.



Product Specification

Standard	AISI, ASTM, DIN, GB, JIS, SUS	Technique	Hot rolled, Cold rolled, Galvanized
Size	50*37-400*102mm+1-12M	Certificate	ISO9001, CE, SGS
Grade	SS330, SS440, SS490, S235JR, 1010, 1015, 1020, etc.		
Application	Owner frame of security door, Auto vent-pipe, Vacuum cup, Clean bucket water sink and so on.		

Product Features

High Strength-to-Weight Ratio: channels provide exceptional weight-bearing capacity for their size, making them ideal for load-bearing structures.

Versatility: The simple yet strong profile allows for various applications in construction, framing, and machinery.

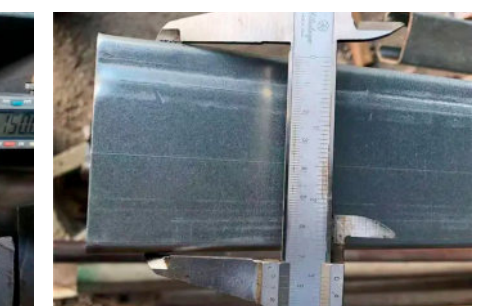
Easy Fabrication: channels can be readily welded, drilled, and cut, enabling easy integration into projects.

Cost-Effective: Due to their efficient use of material and widespread availability, U/C channels offer a cost-effective solution for many projects.



Product Testing

We follow relevant international and domestic standards, conduct strict quality control on C-shaped steel, and conduct comprehensive and accurate testing of various properties of pattern plates to ensure their safety and stability in various application scenarios.



Steel Flat Bar

Steel flat bar refers to steel with a rectangular cross-section and slightly blunt edges. Steel flat bar can be finished steel, or it can be used as a blank for welded pipes and a thin slab for laminated thin plates.



Diameter	0.1~500mm	Thickness	0.3~200mm
Size	0.5mm*4mm*4mm~20mm*400mm*400mm	Width	1~2500mm
Length	2m, 5.8m, 6m, or as required		
Surface	Black, peeled, polishig, bright, sand blast, hair line, etc		
Price Term	EX-work, FOB, CFR, CIF, etc		
Delivery Time	Standard size is in stock, prompt delivery or as order's quantity		
Standard	ASTMA479, ASTMA276, ASTMA484, ASTMA582, ASMESA276, ASMESA484, GB/T1220, GB4226, etc		

Product Display



Round Steel

Round steel refers to a solid strip of steel with a circular cross-section. The specifications of round steel are expressed in millimeters of diameter. Round steel is divided into three types: hot-rolled, forged and cold-drawn.



Round steel is widely used in factory building frames, high-voltage transmission towers, bridges, vehicles, boilers, containers, ships, bolts, steel bars, parts of large machinery, etc.



“

Square Bar

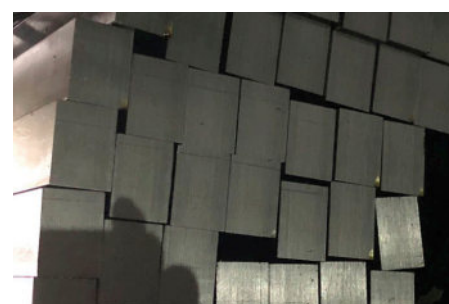
Square steel is a material made of steel ingots, billets or steel materials into various shapes, sizes and properties required by pressure processing. Square steel is solid and belongs to bar material.



”



1. Use professional software to quickly and accurately calculate the quantity of materials required for the formwork support system, reducing the workload of construction technicians.
2. Use steel instead of wood to save wood resources.
3. The main components are standardized and have strong applicability.
4. Construction is simple and convenient.
5. The template has high strength, stiffness and stability.



”

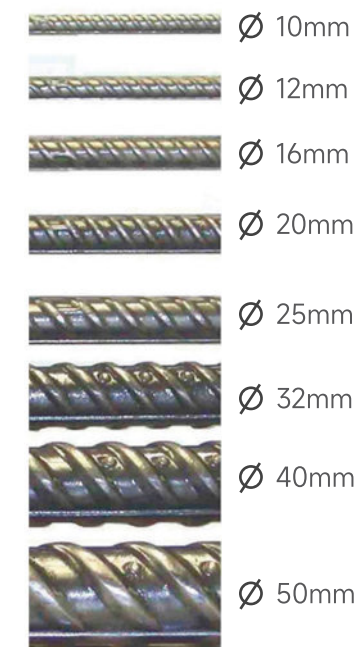
Rebar

Rebar is the common name for hot-rolled ribbed steel bars. The grade of ordinary hot-rolled steel bars consists of HRB and the minimum yield point of the grade. Rebar is a steel bar with ribs on the surface, also known as ribbed steel bar.



”

Item	Steel Rebar, Rebar, Deformed Steel Bar, Ribbed Steel Bar
Material	Q235, Q355, ASTM A53 GrA, GrB, STKM11, ST37, ST52, 16Mn
Size	6mm, 8mm, 10mm, 12mm, 13mm, 14mm, 16mm, 20mm, 22mm, 25mm, 30mm, 32mm, 40mm, 50mm
Length	5m-12m, 5.8m 6m 10m-12m, 12m or as customer's actual reques
Standard	BS4449, GB1449, ASTMA615, A615M
Grade	Grade40/60/75 BS4449 460B/500B GB HRB335 HRB400 HRB500 JIS SD390
Section Shape	Spiral Shap, Herringbone Shap, Crescent Shap
Packing	Bundle or as your requirements



Product Display



Rebar is widely used in the construction of houses, bridges, roads and other civil engineering projects and is an indispensable structural material.

Steel Wire Rod

Steel wire rod is the most common steel wire material for industrial and manufacture application with high hardness, strength, wear resistance and anti-corrosion.



Material	SAE1006, SAE1008, SAE1010, SAE1018, SAE1020, SAE1045, SAE1065, SAE1066, Q195, Q235 etc		
Standard	EN 10219, JIS, G3466, GB/T3094-2000, GB/T6728-2002		
Size	5.5mm, 6.5mm, 7mm, 8mm, 9mm, 10mm, 11mm, 12mm, 14mm		
Length	5.8m, 6m, 11.8m, 12m Or According To The Actual Needs Of Customers		
Surface Treatment	Ordinary Hot Rolling, Antirust Oi, Galvanize, According To Customer Demand		
Packing	In Coil	Size Tolerance	±1%
Coil Weight	2.04-2.1 MT/coil	Dia Tolerance	+/-0.3mm
Coil Diameter	About 1.2m	Coil Length	1.6m-1.7m



Hot rolled carbon steel wire rods has a series of characteristics:

High strength: has a high strength and hardness, can withstand large loads and pressures.

Good plasticity: the material has good plasticity, high elongation, easy to bend and form, and easy to weld.

Good wear resistance: it can be used for a long time without damage under friction and wear environment.

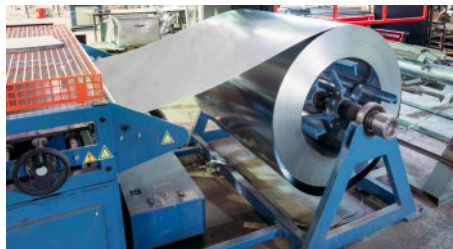
Corrosion resistance: can be used in wet and corrosive media without being affected, good

Ductility and plasticity: the material can obtain good formability during cold working and heat treatment.

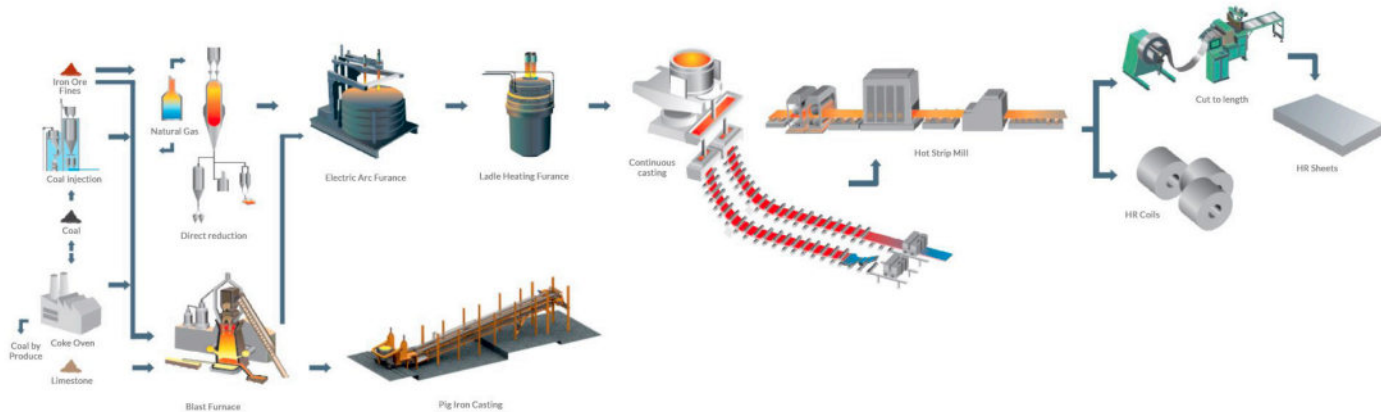


Tinplate

Tinplate, also known as tinplate, is commonly known as electroplated tin sheet, which refers to cold-rolled low-carbon sheet steel or steel strip coated with commercial pure tin on both sides.



Product Process



Galvanized Wire

Galvanized wire is by forming a layer of zinc on the surface of the steel wire, so as to protect the internal steel from the erosion of the external environment, mainly used for anti-corrosion and enhance durability.



NO	SWG		BWG		BG		AWG	
	INCH	MM	INCH	MM	INCH	MM	INCH	MM
5	0.212	5.385	0.220	5.588	0.2225	5.652	0.1819	4.621
6	0.192	4.877	0.203	5.156	0.1981	5.023	0.1620	4.115
7	0.176	4.470	0.180	4.572	0.1764	4.481	0.1443	3.665
8	0.160	4.046	0.165	4.191	0.1570	3.988	0.1285	3.264
9	0.144	3.658	0.148	3.759	0.1398	3.551	0.1144	2.906
10	0.128	3.251	0.134	3.404	0.1250	3.175	0.1019	2.588
11	0.116	2.964	0.120	3.048	0.1131	2.827	0.0907	2.305
12	0.104	2.642	0.109	2.769	0.0991	2.517	0.0908	2.053
13	0.092	2.337	0.095	2.413	0.0882	2.240	0.0720	1.828
14	0.080	2.032	0.083	2.108	0.0785	1.994	0.0648	1.628
15	0.072	1.829	0.072	1.829	1.775	0.0571	1.450	66900
16	0.064	1.626	0.065	1.651	0.0625	1.588	0.0508	1.291
17	0.056	1.422	0.058	1.473	0.0556	1.412	0.0453	1.150
18	0.048	1.219	0.049	1.245	0.0495	1.257	0.040	1.024
19	0.040	1.016	0.042	1.067	0.0440	1.118	0.0359	0.912
20	0.036	0.914	0.035	0.839	0.0392	0.996	0.0320	0.912
21	0.032	0.813	0.032	0.813	0.0349	0.887	0.0285	0.723
22	0.0280	0.711	0.028	0.711	0.03125	0.794	0.02535	0.644
23	0.0240	0.610	0.025	0.635	0.02782	0.707	0.02010	0.573
24	0.0220	0.559	0.022	0.559	0.02476	0.629	0.01790	0.511
25	0.0200	0.508	0.020	0.508	0.02204	0.560	0.01594	0.455
26	0.0180	0.457	0.018	0.457	0.01961	0.499	0.01420	0.405
27	0.0164	0.417	0.016	0.406	0.01745	0.443	0.01420	0.361
28	0.0149	0.376	0.014	0.356	0.01562	0.397	0.01264	0.321
29	0.0136	0.345	0.013	0.330	0.01390	0.353	0.01126	0.286
30	0.0124	0.315	0.012	0.305	0.01230	0.312	0.01003	0.255
31	0.0116	0.295	0.010	0.254	0.01100	0.270	0.00993	0.227
32	0.0109	0.274	0.009	0.229	0.00980	0.249	0.00795	0.202
33	0.0100	0.254	0.008	0.203	0.00870	0.221	0.00708	0.180



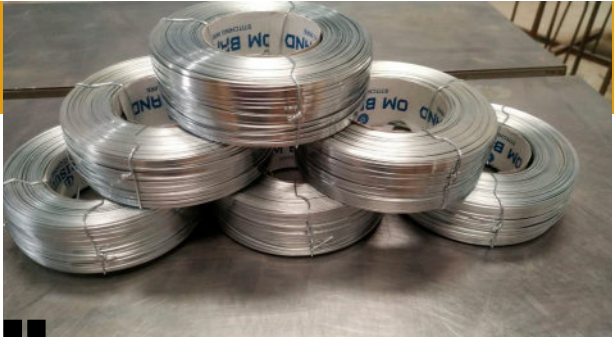
Standard	ASTM, AISI, GB, EN, JIS, DIN
Raw Material	Q195, Q235, SAF1006/SAE1008, SAE1018B
Tensile Strength	350-550N/mm2.
Size	BWG5-BWG36
Zinc Coating	15-25g/mm2, 30-60gmm2, 200-250g/mm2 > 250g/mm2, > =360g/mm2 Can Be Produced As Requirement
Elongation	10%
Processing Service	Picking, Hot dipping, Drawing, Cold-drawing

Product Display



Galvanized Flat Wire

Galvanized flat wire is a flat steel wire that has been galvanized and has excellent corrosion resistance, strength and plasticity. Galvanized flat wire is widely used in construction, transportation, furniture, electrical appliances, communications, meters and other fields.



Product Application

Galvanized flat wire is widely used in construction, transportation, furniture, electrical appliances, communications, meters and other fields. It can be used as a structural part to bear the load, and can also be used as decorative parts and connecting parts.

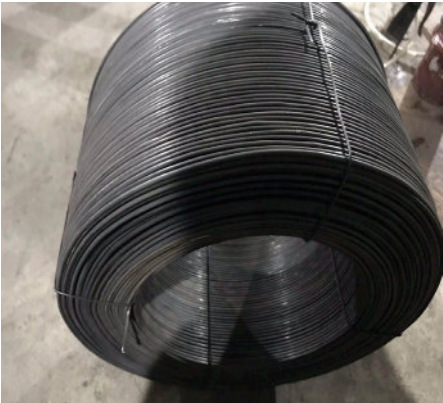


Product Display

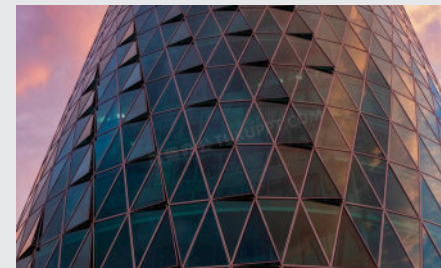


Black Annealed Wire

Black annealing wire is a kind of steel products made by special heat treatment process, mainly using low carbon steel or medium carbon steel as raw materials.

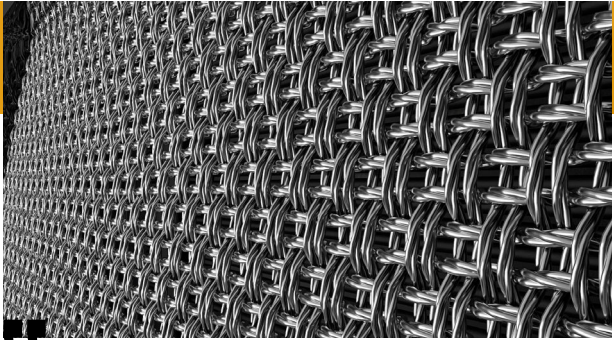


Black annealed wire has a wide range of applications and uses, and its excellent performance and beautiful appearance make it an ideal choice for modern industrial and decorative industries.

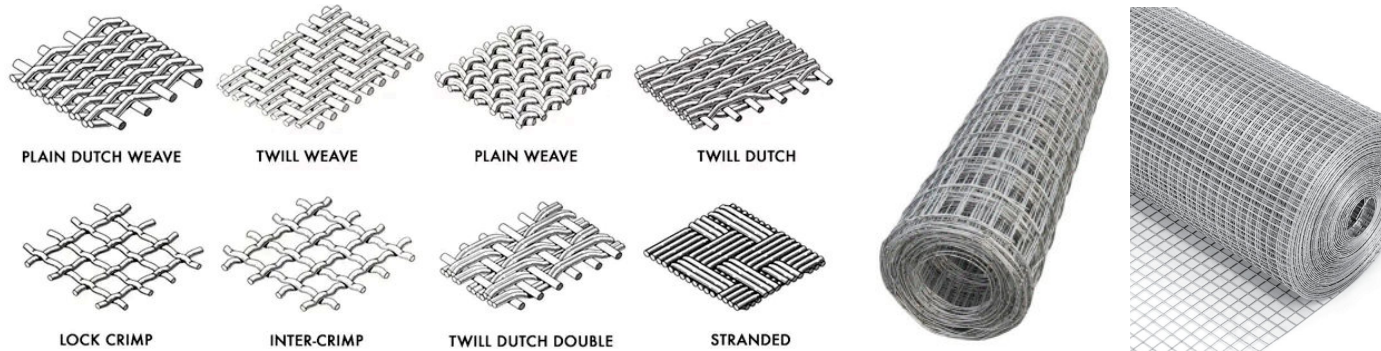


Wire Mesh

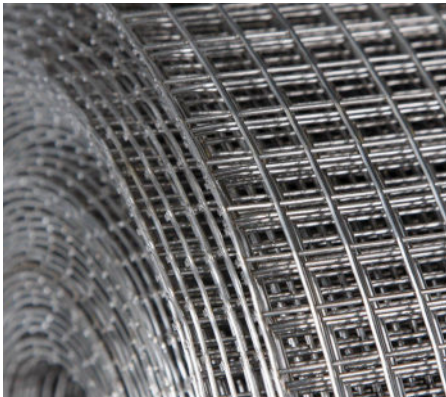
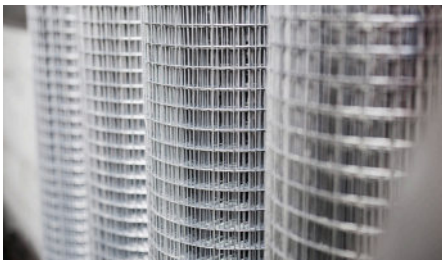
Barbed wire, also known as wire fence mesh or wire mesh, is a mesh structure made of wire or steel wire that is widely used in a variety of fields, including military, civilian, and industrial uses.



Classification By Process



	Wire Diameter	2.5mm, 3mm, 5mm, 6mm, 8mm, Or As Your Request		
	Mesh Size	50x50mm, 100x100mm, 150x150mm, 200x200mm Or As Your Request		
	Apture	6-50mm	Width	1-2 Meter Or Customized
	Length	5-50 Meter Or Customized	Specifications And Models	Ustomized On Demand
	Surface	Surface Passivation Of Cold Plating (Electroplating), Hot Plating, PVC, etc		
	Panel Size	1000x2000mm, 1579 X2254mm, 1500 X 3000mm, 2000 X4000mm, Or As Your Request		



“ Steel Grating ”

Steel grating, also known as steel grating or grating plate, is welded from flat steel and twisted steel. Precision-made steel grating is durable and has a more favorable price than other products.



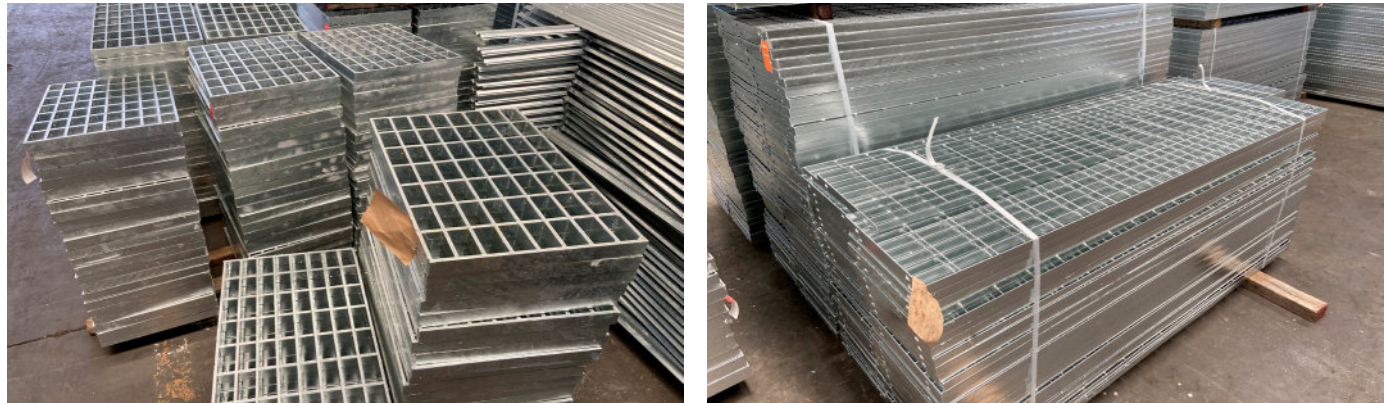
Material	Corbon steel, stainless steel, aluminum alloy
Opening shape	Square, rectangular and scaly, etc
Opening size	Usually between 10mm and 50mm, customized according to specific application scenarios and requirements
Strip thickness	Between 2mm and 10mm
Bar width	Generally between 20mm and 100mm
Surface treatment	Hot dip galvanizing, electric galvanizing, spraying specific productspecifications and parameters vary by manufacturer and application area. When customers purchase steel grilles, they should communicate and confirm with us in detail according to actual needs to ensure that products can meet their specific requirements.



Characteristics of steel grating: high strength, light structure, strong anti-corrosion ability, durable, beautiful appearance, shiny surface, no accumulation of dirt, rain, snow, or water, self-cleaning, easy maintenance, ventilation, lighting, Heat dissipation, anti-slip, good explosion-proof, easy to install, disassemble, etc.



Product Display

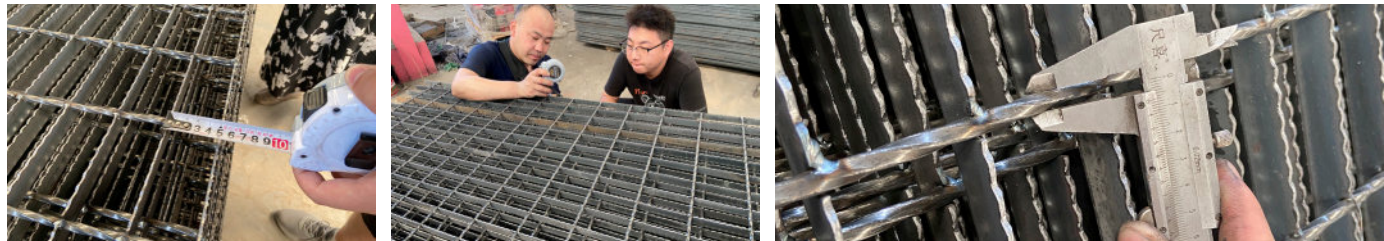


Product Application

Steel gratings are widely used in petrochemical, electric power, sewage treatment, ports and terminals, building decoration and other fields.



Each steel grating is strictly checked by our professional measurement team to ensure that every data meets the standards.



DELIVERY&VISIT

