

# GS21

## OBDII GPS TRACKER



GS21 is an in-vehicle OBD positioning device, which can realize functions such as electronic fence, remote tracking, and vehicle diagnosis. The terminal can meet the requirements of relevant scenarios such as car monitoring, online car-hailing, and car rental.

The GS21 has a size of 47x20x43mm, a small size, and is easy to install and fix. The product has a built-in 80mAh rechargeable battery. It can continue to send positioning data to the platform terminal after power off; dismantling the device can realize the function of disassembly alarm.

### FUNCTION



Real-time Tracking



Driver Behavior Analysis



Trace Playback



User Define Geo-fence



Built-in Battery



Multiple Alert Protections

### PARAMETER

Size	47mm(L)*20mm(W)*43mm(H)
Working Temperature	-20°C to 70°C
Working Voltage	9-35V

Weight	38g
Built-in Battery	80mAh

### HARDWARE SPECIFICATION

Location Accuracy	<=10m
GPS Chip	MTK
GSM Frequency	850/900/1800/1900MHZ
Positioning Time	Hot Start<5SEC(Open Sky) Warm Start<15SEC Cold Start<30SEC(Open Sky)
GSM Antenna	FPC Antenna
GPS Antenna	Built-in Ceramic Antenna
GPRS	Class12. TCP/IP Built-in GSM Module

Channel	20 Class
GPS Sensitivity	-144dBm
Tracking Sensitivity	-162dBm
GPRS LED Indicator	Red
GPS LED Indicator	Yellow
G-sensor	Support

### SOFTWARE SPECIFICATION

Data Upgrade Port	Not Support
Function Port Definition	Not Support
Parameter Setting	SMS Command, Platform
GPRS Upload	Upload Interval Every 10 Seconds
Third-party Checking	WEB/APP

ACC Detection	Support
Geo-fence	Support
Disassemble Alarm	Support
Vibration Alarm	Support
Movement Alarm	Support

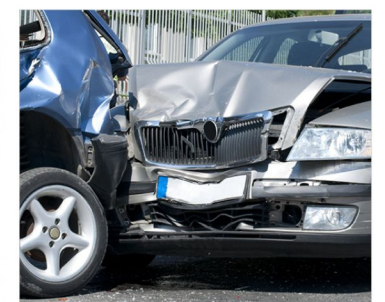
### APPLICATION



Car Rental



Fleet Management



UBI Insurance