



GS22

4G OBDII TRACKER

GS22 is a 4G vehicle OBD positioning device that can realize functions such as electronic fences, remote tracking, and vehicle diagnosis. The terminal can meet the needs of related scenarios such as car monitoring, online car rental, and car rental.

GS22 size is 60x46x22mm, small size, easy to install and fix, the product has built-in 80mAh rechargeable battery, and it can still send positioning data to the platform terminal continuously after power off; dismantling the device can realize functions such as disassembly alarm.

FUNCTION



Real-time Tracking



Driver Behavior Analysis



Trace Playback



User Define Geo-fence



Built-in Battery



Wifi Hotspot Supported

PARAMETER

Size	60mm(L)*46mm(W)*22mm(H)	Weight	56g
Working Temperature	-20°C to 75°C	Built-in Battery	80mAh
Working Voltage	9-35V		

HARDWARE SPECIFICATION

Location Accuracy	<=10m	Channel	50 Class
GPS Chip	MTK	GPS Sensitivity	-160dBm
Frequency	2G GSM/3G UMTS/4G LTE	Tracking Sensitivity	-162dBm
	Hot Start<1SEC(Open Sky)	Power LED Indicator	Red
Positioning Time	Warm Start<15SEC	GPS LED Indicator	Blue
	Cold Start<32SEC(Open Sky)	GPRS LED Indicator	Yellow
GSM Antenna	FPC Antenna		
GPS Antenna	Built-in Ceramic Antenna		
GPRS	Class12. TCP/IP Built-in GSM Module		

SOFTWARE SPECIFICATION

Data Upgrade Port	Not Support	ACC Detection	Support
Function Port Definition	Not Support	Geo-fence	Support
Parameter Setting	SMS Command, Platform	Disassemble Alarm	Support
GPRS Upload	Upload Interval Every 10 Seconds	Low Power Alarm	Support
Third-party Checking	WEB/APP	Movement Alarm	Support

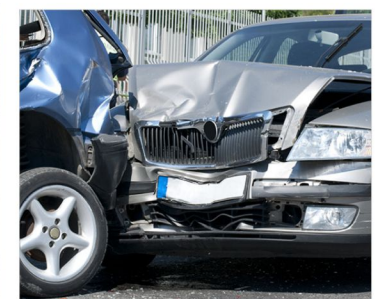
APPLICATION



Car Rental



Fleet Management



UBI Insurance