

兔薇薇

# 配网指南



NO.HA9991

## 网络配置

### 一、开机与配网

- ① 下载“斯麦星球”APP，并确保要连接的WiFi具有2.4G频段。
- ② 长按心跳键2秒，播报“开机”后，松手并等待几秒钟。



斯麦星球

① 若播报“我已进入配网状态，开始配网吧”，则打开“斯麦星球”APP，并开启蓝牙和定位，然后点击“添加设备”进行配网；配网成功后，玩具播报“我已联网，让我们开始对话吧”。

② 若直接播报“我已联网，让我们开始对话吧”，说明玩具已经配置过网络了，无需进行配网操作。

### 配网步骤：



### 二、唤醒与对话

- ① 玩具配网成功后，可以通过短按“心跳”按键，或用“Hi, Smile”来唤醒AI对话功能。
- ② 唤醒成功后玩具播报“我在呢”，即可进行对话；超过5分钟未进行对话，则需要重新唤醒。

③ 若玩具离开配网指定的WIFI环境，此时唤醒模块则会播报“现在网络状况不好，我可能没办法回答你的问题，你可以按我身上的按钮，我可以唱歌或跳舞哦”。

④ 重新回到配网指定的WIFI环境后，模块会自动重连；或者用户可以按照下面“解除配网”的操作，让玩具重新进入配网模式。

### 三、关机

长按“心跳”按键2秒，玩具播报“关机”后松手即可。

### 四、低电量警告

当电池电量小于20%时，玩具每5分钟会播报一次“电量不足，请帮我充电吧”

### 五、解除配网

若玩具要离开当前已配网成功的WIFI环境，可按下述操作进行解绑，解绑后玩具会关机，待到新的WIFI环境下再次进行配网操作。



Bunny Vivian

# NETWORK SETUP GUIDE



NO.HA9991



# NETWORK CONFIGURATION

## I. Power On and Network Setup



Smile World

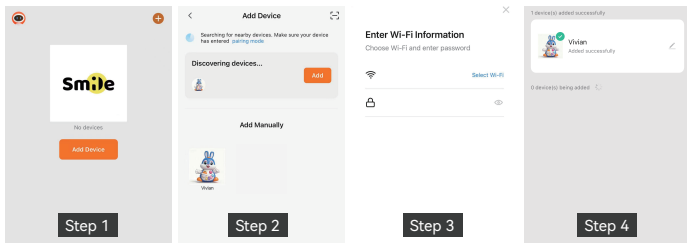
① Download the "Smile World" app and ensure that the Wi-Fi you want to connect to has a 2.4GHz band.

② Press and hold the heartbeat key for 2 seconds. After hearing "Power on", release and wait a few seconds.

① If you hear "Reset successfully, please start configuring the network", then open the "Smile Planet" app, enable Bluetooth and Location Services, and tap "Add Device" to configure the network. After successful configuration, the toy will announce "The network connection is successful, let's start charting".

② If you directly hear "The network connection is successful, let's start charting", it means the toy has already been configured and does not require network setup.

### Network Setup Steps:



## II. Wake-up and Dialogue

① After the toy is successfully connected to the network, you can activate the AI dialogue function by briefly pressing the "Heartbeat" button or by saying "Hi, Smile".

② After successful activation, the toy will announce "Hi", and you can start a conversation. If no dialogue occurs for over 5 minutes, it will need to be reactivated.

③ If the toy leaves the configured Wi-Fi environment, the wake-up module will announce: "No network, please check the network or reconfigure it."

④ When returning to the configured Wi-Fi environment, the module will automatically reconnect. Alternatively, users can follow the "Reset Network Configuration" steps below to make the toy re-enter pairing mode

### III. Power Off

Press and hold the "Heartbeat" button for 2 seconds. Release the button after the toy announces "Power down".

### IV. Low Battery Warning

When the battery level drops below 20%, the toy will announce "The power is low, please charging" every 5 minutes.

### V. Unbinding Network

If the toy needs to leave the currently connected Wi-Fi environment, perform the following unbinding operation. It can then be set up again in a new Wi-Fi environment.

